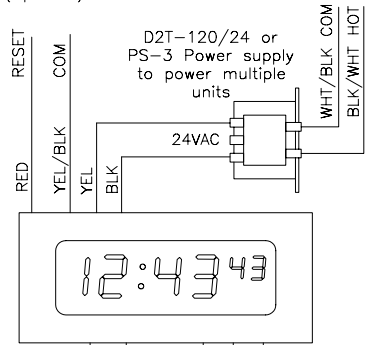


Specifications

120VAC or 24VAC
Clock System Reset
(Optional)

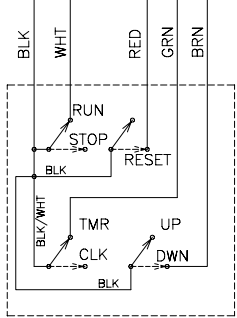
120VAC Input
(from reliable source for
critical timing functions)



Typical Connection to DLU
Series Elapsed Timer. See
C-494 for more information.

Belden 5403UE
Cable or Equiv.
Up to 100'

10ft. cable included. Cable
may be extended using
equivalent wire.



REMOTE SWITCHES
DLU-ET-CTRL

Fig. 1

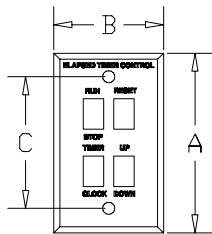


Fig. 2

Mount to Single
Gang or Handy
Box By others

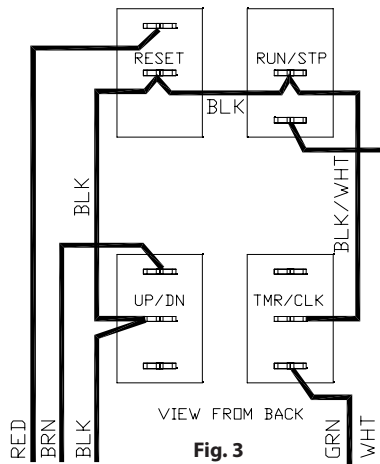


Fig. 3
Internal Wiring



ELAPSED TIMER CONTROL SWITCHES



Model: DLU-ET-CTRL

For use with DLU225-6ET
and DLU400-6ET
Elapsed Timer Units

Part Number	Fig	Description	Dim A	B	C
DLU-ET-CTRL	2	Remote Switch Controls	4.50	2.75	3.25

The **DLU225-6ET** and **DLU400-6ET** function as both a clock and an elapsed timer unit. Timekeeping can be handled either as a stand alone unit or as a system clock connected to the building's clock system. Most clock reset protocols are supported and automatically detected without the need for jumper or dip switch settings. See Bulletin C-427 for a list of supported formats.

As a timer, the DLU225-6ET and DLU400-6ET function as a count up/down elapsed time indicator with a simple intuitive switch interface. Clock or timer display is selectable via the remote switch control DLU-ET-CTRL. The switches are sealed to the IP65 standard for cleaning.

Alternatively, the timer functions can be controlled by other equipment such as "code blue" equipment, master clocks, or manufacturing controls using the optically isolated input.

Timer Remote Switch Functions:

Timer/Clock: Select timer or clock display. The timer will continue to operate while the clock is displayed. *Blinking colon indicates timer mode.*

Up/Down: While in timer mode, this switch will select count-up or count-down timer operation. In the count-down duration setting menu, this switch is used to select between increment or decrement.

Run/Stop: While in timer mode, this switch will start or stop the timer.

In the count-down duration setting menu, this switch is used to modify the values either up or down depending upon the Up/Down switch.

Reset (Count-Up Mode): Will reset the timer to 0:00.

Reset (Count-Down Mode): Will reset the timer to the previous count-down value. Hold for 7 seconds to enter the count-down duration setting menu.

Reset (Count-Down Duration Setting menu): The reset switch is used to enter the values as chosen using the Run/Stop and Up/Down switches.

TIP: For installations where the clock function is not desired, connect per the wiring diagram for Timer Only installations. When wired in this fashion, the unit will turn off when "Clock" is selected using the Timer/Clock switch. See Bulletin C-494 Elapsed Timer Operating Instructions for more details.



Operation using DLU-ET-CTRL Remote Switches

Count-Up Timer Operation:

To time the duration of an event, follow these steps:

1. Set the Timer/Clock switch to **Timer**.
2. Make sure the Run/Stop switch is set to **Stop**.
3. Set the Up/Down switch to **Up**.
4. If not already at 0:00, Momentarily press the **Reset** switch.
5. When the event begins, set the Run/Stop switch to **Run**.
6. When the event ends, set the Run/Stop switch to **Stop**.

During the event the timer can be paused and continued using the Run/Stop switch.

To time the next event, Momentarily press the **Reset** switch.

The time duration will display in MM:SS format until the duration exceeds one hour when it will automatically switch to HH:MMss format. Maximum event duration is 99h59m59s, then the timer will return to 0:00 and continue.

Count-Down Timer Operation:

To display the time remaining of a known event, the count-down duration can be set to any value between 1s to 99h59m59s. When the duration expires, the built-in beeper can sound. The beeper duration can be adjusted as described later in the *bd* menu. Alternately, an open-collector output is available to energize an external relay (consult factory).

1. Set the Timer/Clock switch to **Timer**.
2. Make sure the Run/Stop switch is set to **Stop**.
3. Set the Up/Down switch to **Down**.
4. Momentarily press the **Reset** switch.

The duration of the previous count-down event will display. If this is correct, skip to step 10.

5. To change the duration, Press and **hold the RESET button for 7 seconds**.

6. The hours value will blink, modify the hours value using the **Up/Down** and **Run/Stop** switches. Selecting **Run** will modify the value in the direction of the Up/Down switch. Select **Stop** when the desired hours are shown.

7. Press **Reset** and the minutes value will blink. Modify as necessary using the **Run/Stop** and **Up/Down** switches.

8. Press **Reset** and the seconds value will blink. Modify as necessary.

9. Press the **Reset** switch and the chosen duration will display.

****Make sure the Up/Down Switch is returned to the Down selection.**

If the duration is correct...

10. When the event begins, switch the Run/Stop switch to **RUN**.

11. To pause the count-down, switch to **Stop**.

When the count reaches 0, the beeper will sound for the duration selected in the *bd* menu.

12. To time another event, set the Run/Stop switch to Stop and repeat from step 4.