

The NATIONAL TIME 900 Series 8 Input / 4 Output Module provides 8 zones of supervised inputs, and 4 zones of supervised outputs. The inputs can be used to monitor conventional smoke detectors, pull stations, water flow switches or dry contact devices. Inputs have either Style D/E (Class A) or Style B/C (Class B) supervision. Each Input may be individually configured for alarm verification or instant alarm modes. Four 1 Amp Power Limited outputs for indicating appliances (i.e. horns, strobes, bells etc.) are provided with Style Z (Class A) or Style Y (Class B) supervision. Inputs and outputs may be individually configured for either Class A or Class B supervision. Each output has an electronic fuse protection with auto fuse reset. Power to drive the indicating appliances may be unregulated 24VDC as provided by the A900-Power Expansion module.

## **FEATURES**

4 Outputs, 24VDC 1 Amp

Power Limited

Electronic Fuse Protection

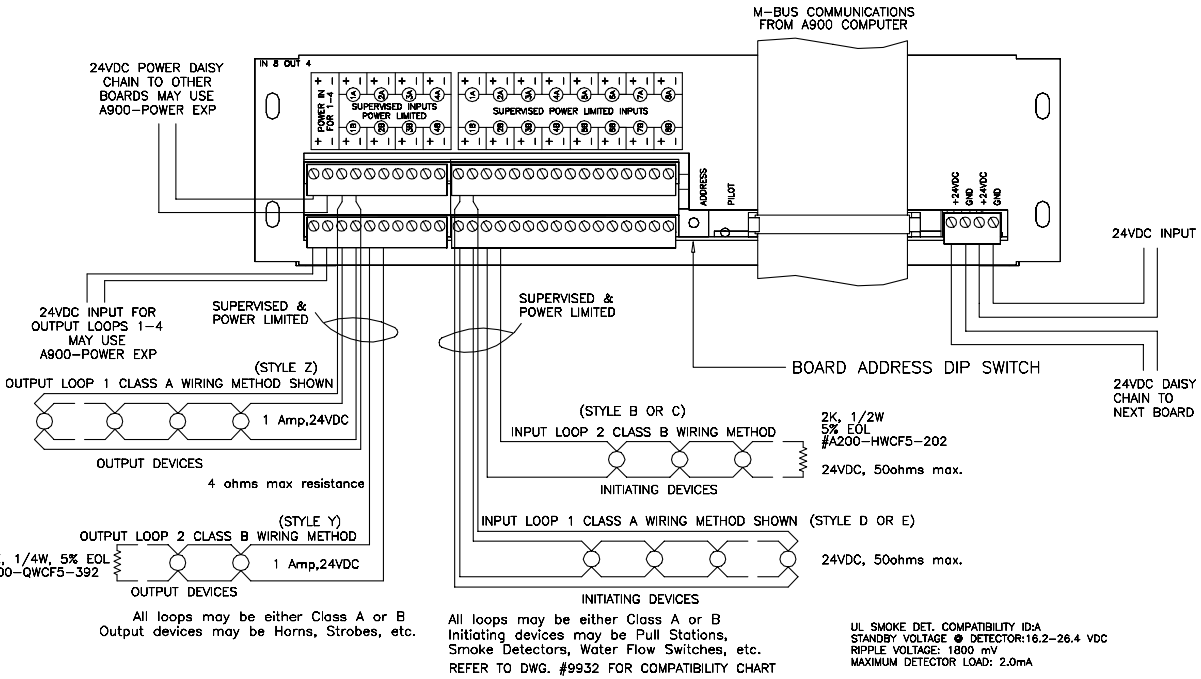
Supervised Output  
Style Z or Y (Class A or B)

8 Supervised Inputs  
Style D/E or B/C (Class A or B)

Alarm Verification

U.L. Listed

# Wiring Diagrams



# Specifications

- Power Input:** Supervision/Module Power: 24VDC regulated, 5VDC via M-Bus  
For Outputs: 24VDC 4A max. (may be unregulated)
- Outputs:** 4 Loops, Class A or B, 1A each, Power Limited, 4 Ohms max. resistance
- Inputs:** 8 Loops, Class A or B, Power Limited, 50 Ohms max. resistance
- Terminations:** Removable Screw Terminals. 12AWG 10A
- Finish:** Powder Grey
- Dimensions:** 3"x 10.25"x 4.35" with mounting ears.  
Requires 2 rack slots.
- Net Wt.:** 1.33 lbs.

# Ordering Information

Part No.	Description
A900-IN 8 OUT 4	8 Input 4 Output (1A ea.) Style Y or Z (Class B or A) Supervision